



Republic of Congo's Responses to CFP and TAP Comments

Georges Boundzanga
National REDD+ Coordinator

16th Meeting of the FCPF Carbon Fund, Paris



Outline

1. REDD+ and ROC's development agenda
2. Enabling conditions
3. Capacity development
4. Cocoa smallholder model
5. Carbon accounting
 - a. Uncertainty analysis and accuracy assessment
 - b. Peatlands, GHG consistency and reversals
 - c. Reference level
 - d. Adjustment
6. Private sector involvement

Additional slides

7. Additional information on adjustment
8. Progress on readiness since R-Package assessment
9. Reversal risk

REDD+ and ROC's Development Agenda

- **Mechanism on allocation of concessions:** 2 decrees approved to establish National Council and Interministerial Committee on Land Use Management (June 2017)
- **Cross-sectoral coordination** on land use issues through Interministerial Committee chaired by President and Prime Minister; 1st session (June 2017):
 - **Mining permits in ER Program area:** all permits in Odzala Kokoua National Park canceled, 6 permits to be reviewed in case of land use conflicts by the National Council on Land Use Management, chaired by President
 - Approach regarding allocation of **new palm oil concessions** in context of APOI (MoU with TFA signed on 21 March 2017)
- **High-level decision-making** on REDD+ through ministerial chamber of CONA-REDD chaired by Prime Minister

Next steps	Timeline
Publish the 2 decrees establishing land use institutions	30 June 2017
Publish decree establishing CONA-REDD chambers	31 July 2017
Monitor progress on REDD+ policy developments through governance matrix (Ministry of Planning / WB)	First matrix by end July 2017 Updates every 2 months
Publish cancellation decree for mining permits in NP	30 June 2017
Adopt national principles on sustainable palm oil (TFA)	December 2017
Prioritize REDD+ in 2017-21 National Development Plan	September (Draft NDP)

Enabling Conditions

- Progress on **land use planning**:
 - ✓ Roadmap for land use planning finalized (WRI/PROFOR)
 - ✓ Simple national land use map finalized
 - ✓ 6 departmental land use schemes finalized, 2 in progress
- Challenge is to **secure additional financing** for implementation of roadmap: Development and implementation of national/departmental land use plans prioritized in National REDD+ Investment Plan as basis for funding requests to CAFI (departmental level) and GCF (national level)
- **New Forest Code** work in progress, regulations drafted

Next steps	Timeline
Submit REDD+ Investment Plan to CAFI and FIP	October 2017
Submit concept note / project proposal to GCF	June 2017 / January 2018
Finalize and adopt new Forest Code and regulations	November 2017

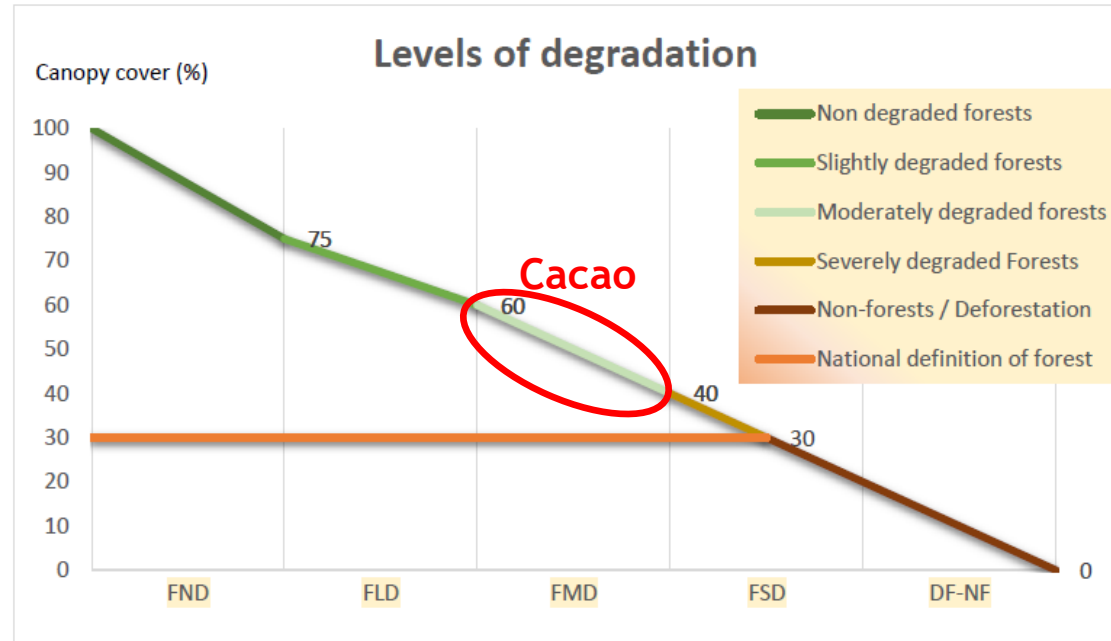
Capacity Development

- Small team of experts from **CN-REDD** to be integrated into MEFDDE
- Capacity building for **departmental institutions**, e.g. CODEPA-REDD, through IDA project, e.g. budget reserved for training, equipment
- Strengthening of **local governance** capacities through GEF project and FIP
- Support for ER Program management at decentralized levels through **Program Management Unit (PMU)**, e.g. on safeguards application, reporting

Next steps	Timeline
Develop transition plan for CN-REDD	July 2017
Launch IDA Integrated Public Sector Reform Project	September 2017
Launch GEF project	September 2017
Develop ToR for PMU	August 2017

Smallholder Cocoa Model

- **Status quo:** slash and burn agriculture encroaching on forests
- **Alternative:** Reduced slash and burn footprint through intensification and agroforestry => land taken out of production becomes available for regeneration



- Shade-grown cocoa only in **community development zones**, not in forest production units
- **New Agricultural Law** will integrate:
 - Limitation of cocoa cultivation to moderately degraded forests (40-60% canopy cover or 100-123 trees/ha)
 - Requirement to maintain of at least 100 trees/ha shade cover

Carbon Accounting: Uncertainty and Accuracy

- Difficulties with **uncertainty analysis** similar to other countries (Ind. 9.1):
 - Issue is related to propagation of errors using Monte Carlo method, not to estimation of uncertainty of activity data and emission factors
 - Uncertainty analysis is relevant at the time of monitoring, i.e. for ER estimation and uncertainty discount
- Ind. 9.1. is not related to **accuracy assessment** (Ind. 8.1, which is met):
 - ROC has addressed comments and applied good practice (Olofsson)
 - Remaining issue is 55% error in deforestation, which is related to technical limitations of the method in HFLD regions; general guidance from GFOI is work in progress

Next steps	Timeline
Engage with technical partners (GFOI) to improve capacities for implementation of Monte Carlo methods	June 2018
Improve precision of activity data to address high errors	October 2017

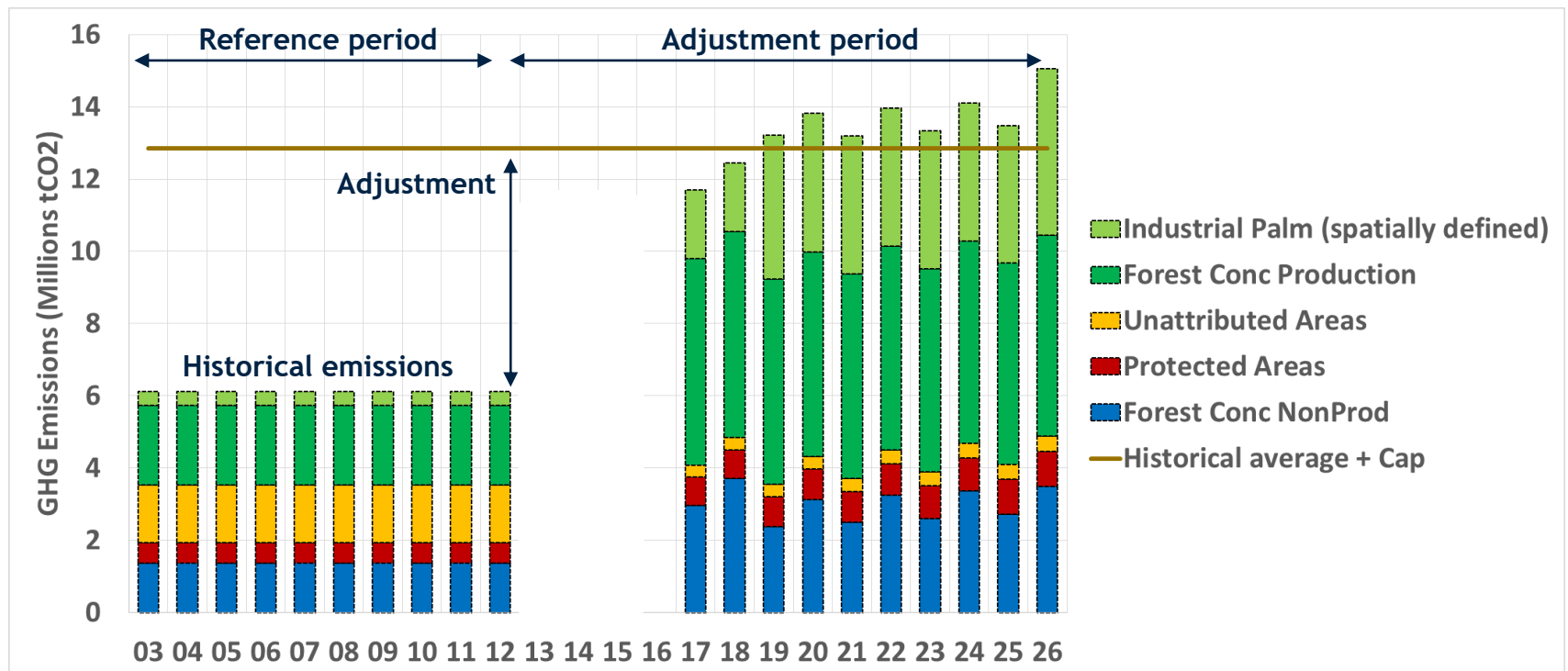
Carbon Accounting: Peatlands, Consistency and Reversals

- **Peatlands:**
 - SOC and non-CO₂ emission are not significant (ref. technical note)
 - AGB and BGB is included in carbon accounting, SOC will be monitored and reported using available Tier 1 methods as proposed by CFP
- **Consistency with national GHG inventory (Ind. 10.3):**
 - 1st step: ER Program activity data and emission factors for deforestation are consistent with national FREL
 - 2nd step: National FREL will feed into GHG inventory
- **5% reversal threshold** is a mistake, it is not part of the calculations (Ind. 21.1)

Next steps	Timeline
Prepare 3 rd National Communication and Biennial Update Report (BUR) that integrates the national FREL data in the GHG inventory	End of 2018
Monitor SOC and non-CO ₂ emissions from deforestation	At first monitoring event (June 2019)

Carbon Accounting: Reference Level

- Distinction between **planned/unplanned deforestation and degradation** is only for the purpose of calculating the adjustment, i.e. activity data are collected comprehensively across the accounting area using a single method
- **Annual historical emissions** are exclusively based on activity data from 2003-2012 using the sampling approach (no confusion with adjustment)
- The **upwards adjustment** of the historical average is based on i) empirical data from 2012-2015, and ii) projections thereafter



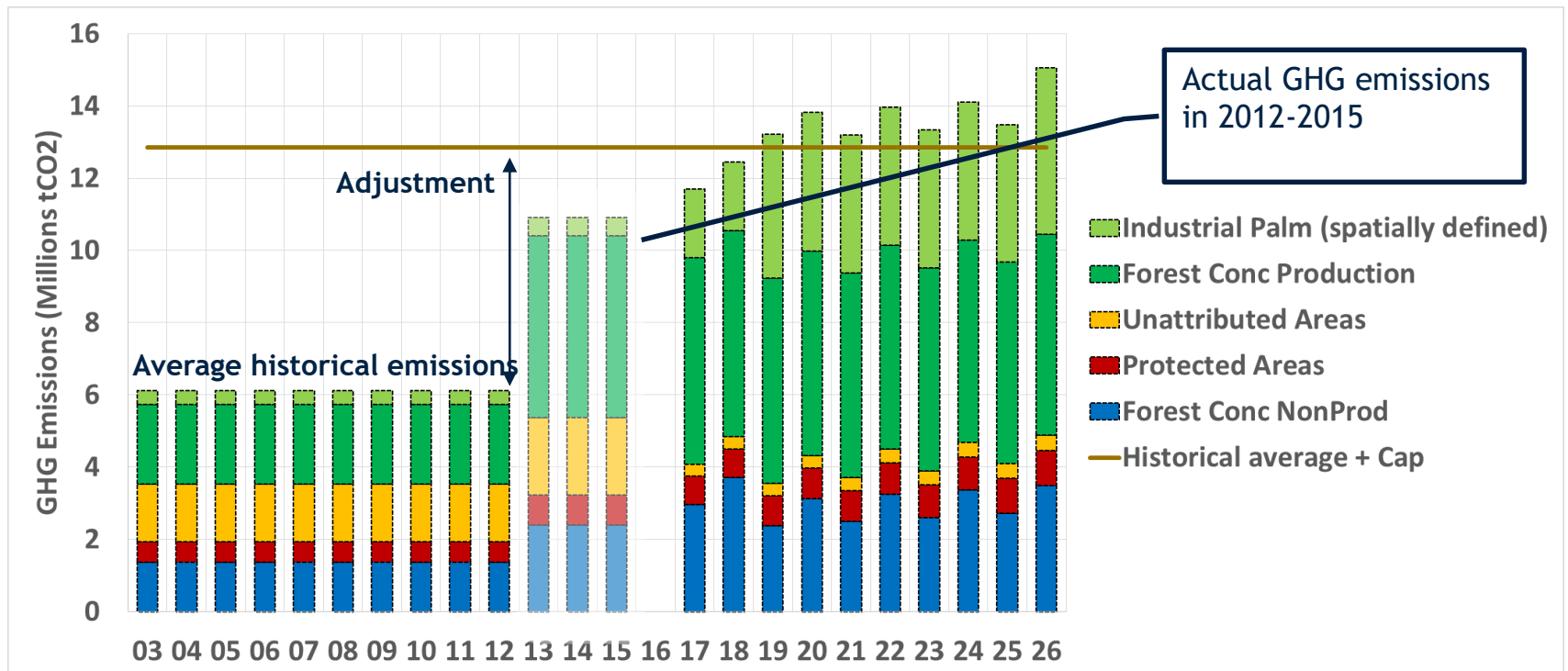
Carbon Accounting: Adjustment (1)

- **Conservative assumptions:**
 - Development of **palm oil plantations based on conservative assumptions** about implementation of departmental development plans and companies' business plans
 - Natural population growth rate stable but expected **acceleration of in-migration** based on new investments in forest concessions and mines, as well as road construction (BZV-Ouessou, Ouessou-Bangui, Ouessou-Ebolova)
 - Direct deforestation from **new/improved roads** (Ouessou-Bangui, Ouessou-Ebolova)
 - Timber market is part of justification, but not quantification
- **Methodology** for calculating the adjustment:
 - Based on simple methods (details in additional slides)
 - Impression of complexity is due to multiple Excel spreadsheets

Carbon Accounting: Adjustment (2)

- **Plausibility of the adjustment:**

- GHG emissions in 2012-2015 estimated with actual data show that emissions in that period were already **76% of the adjustment**
- Increase in GHG emissions due to new forest concessions and post-2007 crisis recovery



Private Sector Involvement

- **Companies are ready to engage** in ER Program and change BAU practices
- **RIL** in the ER Program is not only about degradation, i.e. optimizing road systems and tree felling practices, but it is a **package of activities** including also, e.g., preventing encroachment in forests (small-scale deforestation/ degradation) and supporting livelihood activities
- ECO-OIL is pursuing **RSPO certification** as a result of involvement in ER Program development

Next steps	Timeline
Finalize RIL manual	August 2017
Adopt national principles on sustainable palm oil (TFA)	December 2017
Private sector to prepare project documents (contingent on acceptance of ER Program into CF portfolio)	Prior to ERPA signature

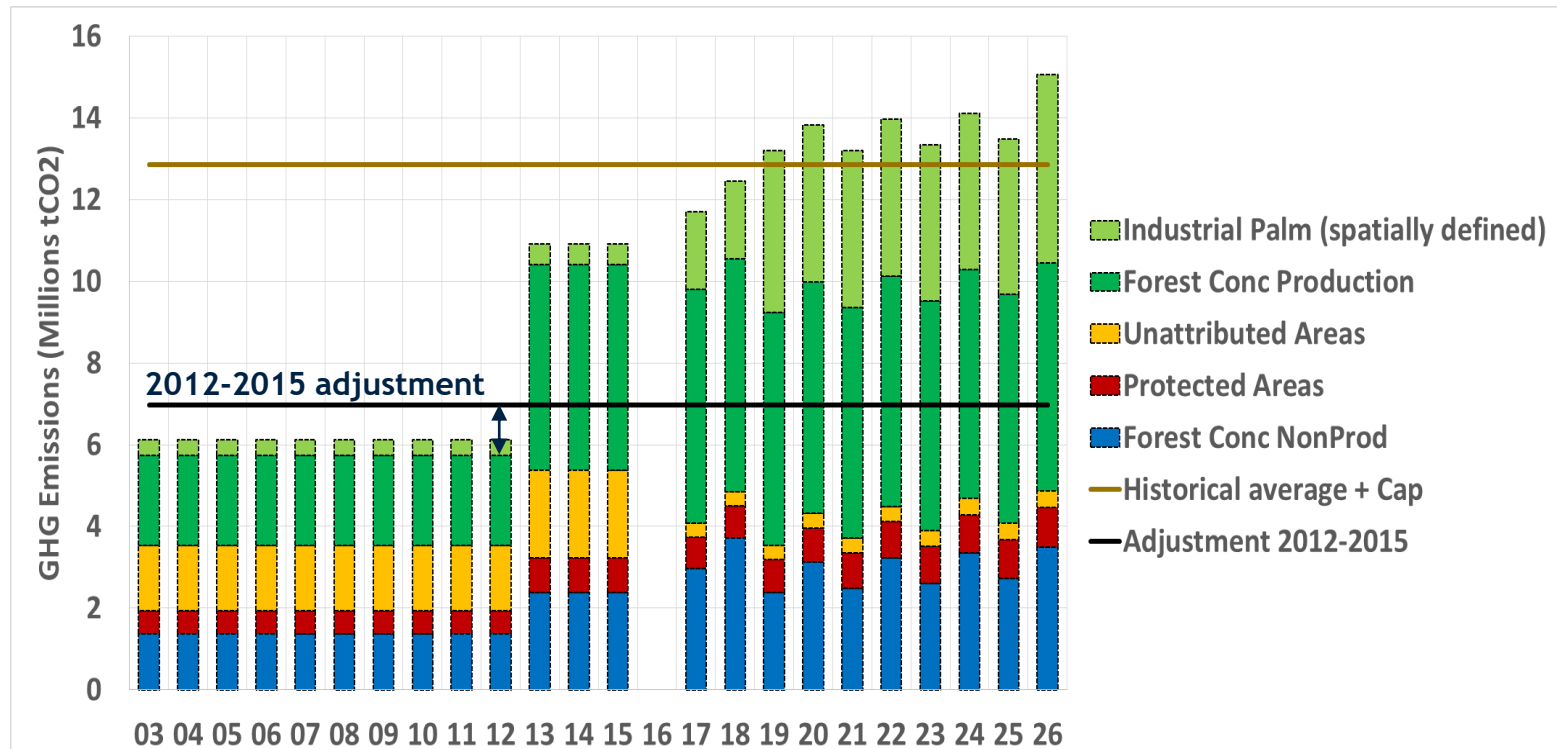
Additional slides

Adjustment

- The upwards adjustment of the historical average is based on the following two components:
 1. 2012-2015 adjustment based on empirical data
 2. Projections for post-2015:
 - a. Planned deforestation and degradation (palm oil and forestry)
 - b. Population growth (in-migration)
 - c. Road construction

Adjustment Component 1: Increase in 2012-2015

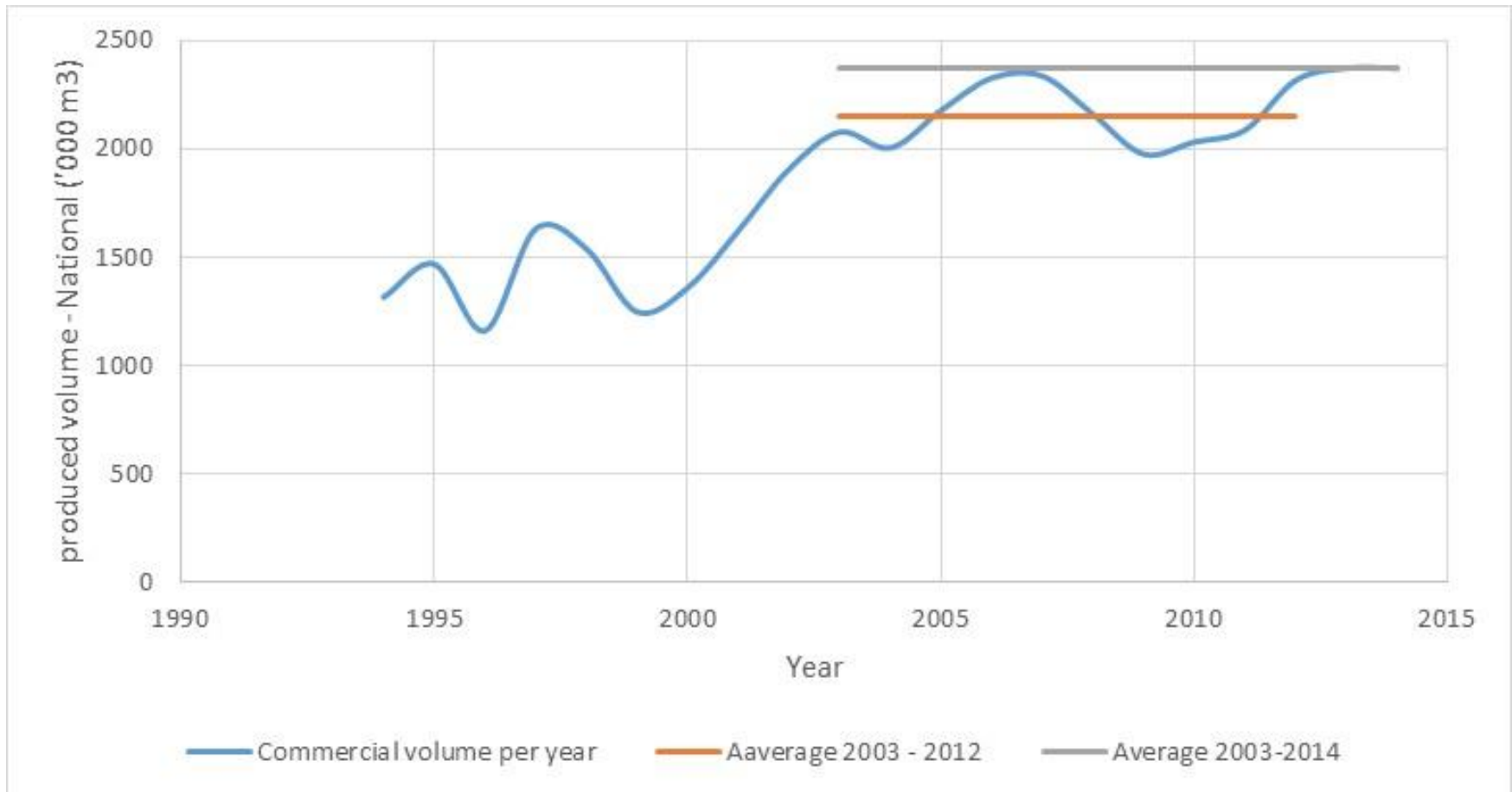
- Adjustment of the deforestation rate of 2003-2012 using empirical data from 2012-2015
- It is conservative: Adjustment is based on average 2003-2015 rates, while GHG emissions in 2012-2015 were significantly higher
- Represents 13% of the total applied adjustment



Adjustment Component 1: Increase in 2012-2015

Explanation for increase in GHG emissions in 2012-2015 period:

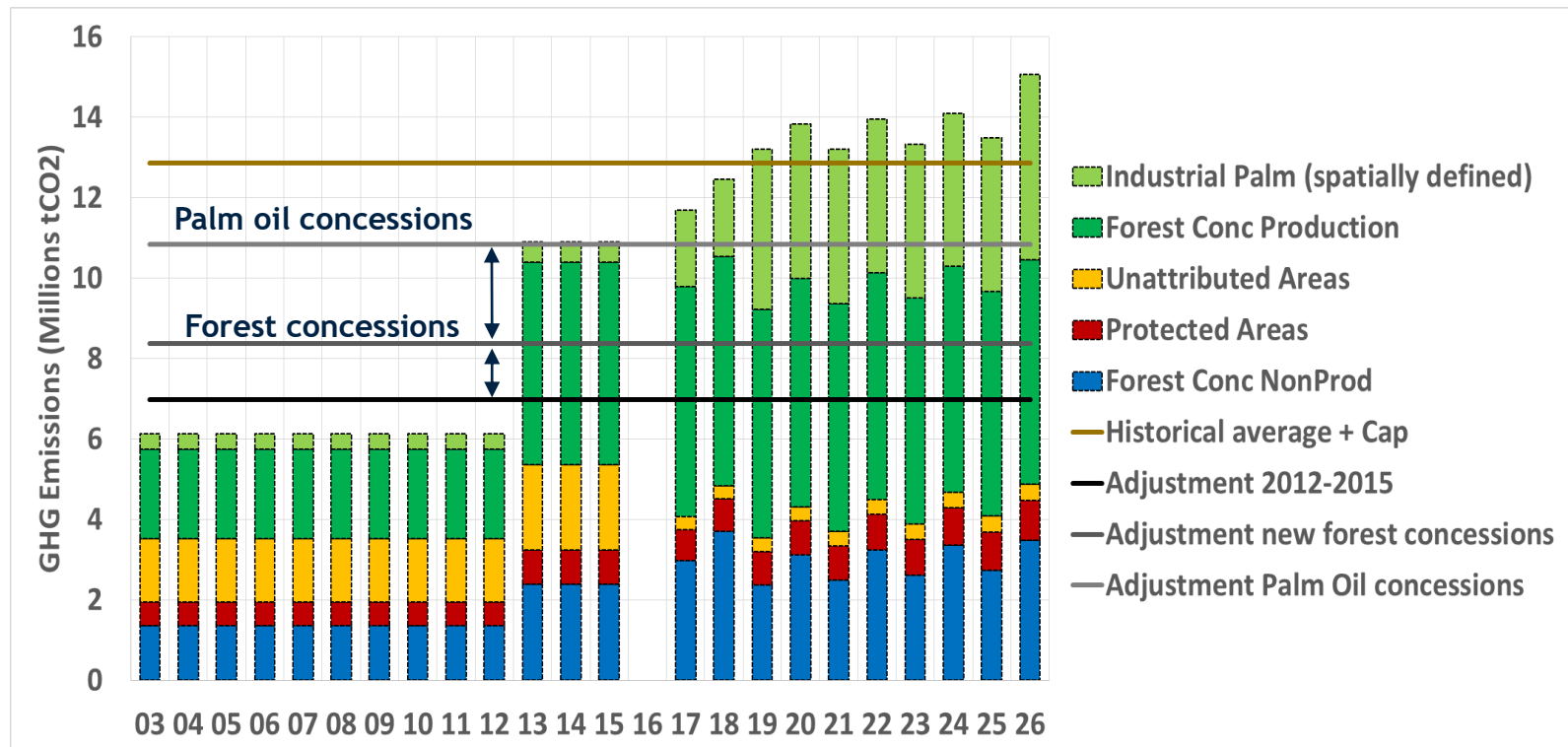
Trends in commercial volume of national forest production: Long-term increase in production, impact of 2007 economic crisis, and post-crisis recovery:



Adjustment Component 2: Projections post-2015

a) Planned deforestation and degradation:

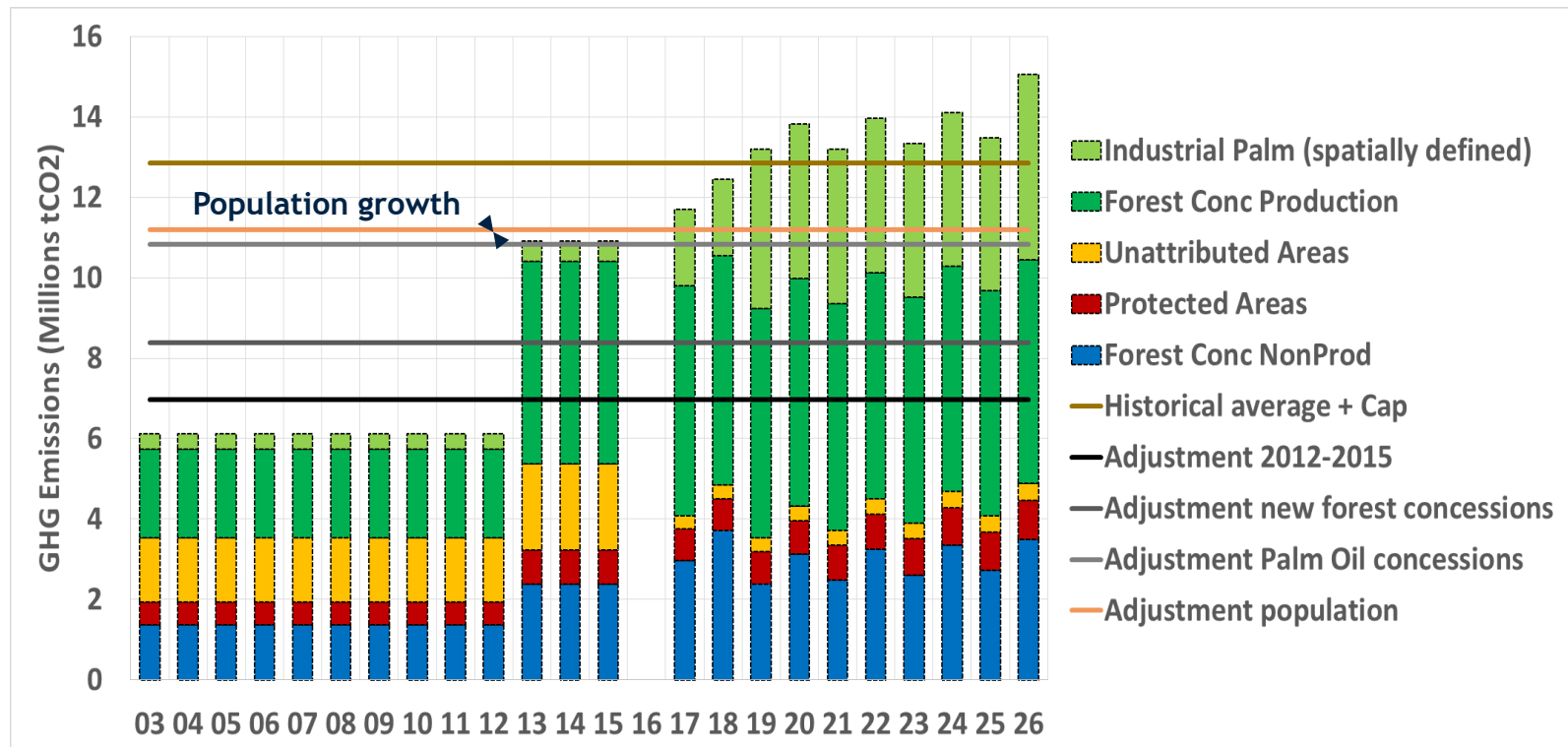
- Based on existing business plans or licenses of legally sanctioned activities (i.e. palm oil, 3 new forest concessions entering into operation)
- Forest concessions represent 23% of adjustment, palm oil concessions 40%
- Assumptions partly confirmed by actual emissions in 2012-2015



Adjustment: Component 2: Projections post-2015

b) Population growth:

- Deforestation rates 2003-2015 compounded yearly at a rate equivalent to population growth (3%), e.g. deforestation in year 0 is 235 ha/year, then in year 2 = $235 * (1+3\%)^2 = 249$ ha/year
- Not applied in forest concession production areas
- Population growth represents 6% of total adjustment

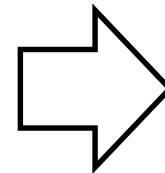


Adjustment: Component 2: Projections post-2015

c) Road construction:

- Extrapolation based on empirical data
- Improvement of Brazzaville-Ouesso road was mostly finalized by 2012. Relative rates of deforestation and degradation changed from 2003-2012 and 2012-2015, and at different “distances” from the roads
- In areas closer to roads, deforestation rates were higher, and there was a substantial increase between the two periods due to the improvement of the road

Average Annual DF and DG Transitions in Road	Deforestation Rate in Cost-Distance Bands (2003-2012)	
COST_DIST_BAND	% DG	% DF
1	1.17%	1.54%
2	0.79%	0.97%
3	0.72%	0.68%
4	0.59%	0.53%
5	0.48%	0.48%

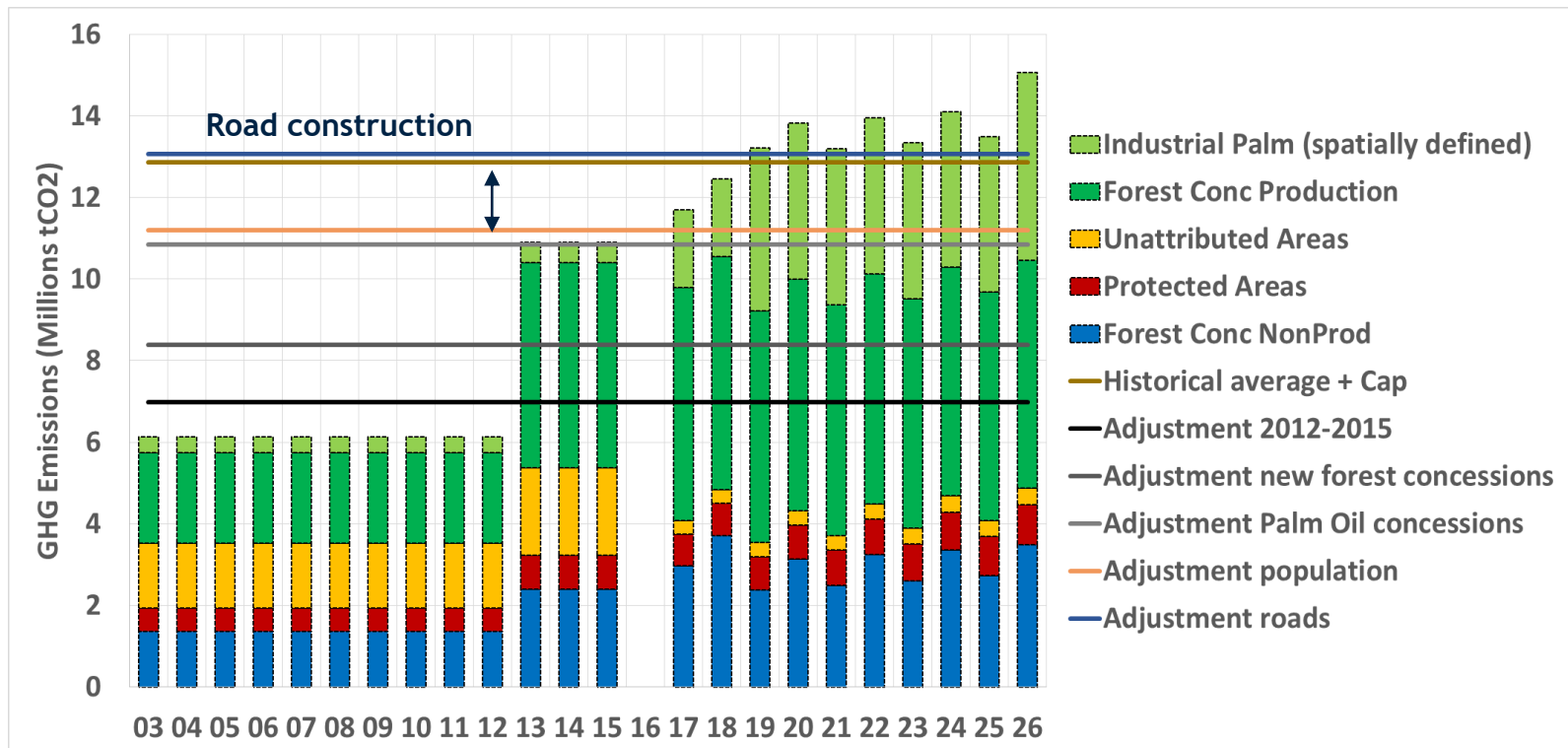


Deforestation Rate in Cost-Distance Bands (2012-2015)	
% DG	% DF
1.85%	1.68%
1.59%	0.93%
1.82%	0.68%
1.71%	0.49%
1.25%	0.40%

Adjustment: Component 2: Projections post-2015

c) Road construction:

- Increased deforestation and degradation rates were assumed for the areas close to the new road Ouesso-Bangui and the improved road Ouesso-Ebolova
- Road construction represents the remaining 18% of the capped adjustment.



Progress on Readiness since R-Package Assessment

- **Status of readiness:**
 - ✓ National REDD+ Strategy completed
 - ✓ SESA completed
 - ✓ Safeguards instruments (ESMF and 5 sub-frameworks) completed
 - ✓ Reference level assessed by UNFCCC (April 2017)
 - ✓ FAO gap assessment on MRV: ROC well advanced technically and capacities built at CNIAF, need to strengthen institutionalization

Next steps	Timeline
Secure co-funding for MRV: GCF proposal, ER Program, potentially others (FAO)	January 2018
Secure World Bank clearance of safeguard instruments	September 2017

Reversal Risk

- Addressing reversal risks (Ind. 18.2):
 - Policy change to prioritize REDD+ agenda (governance matrix)
 - Establishment of sustainable livelihoods for communities
 - Change of BAU business model for private sector
 - Results-based payments after ERPA term through new sources, e.g. GCF